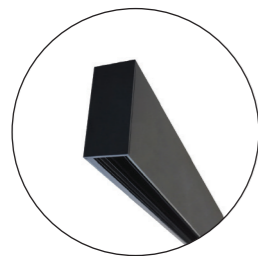


## Magnetic track system 4.0

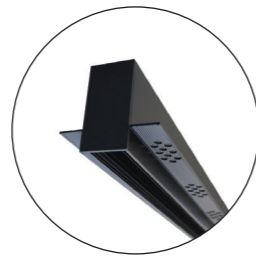
Ray nam châm 4.0



Surface Mount track  
(Ray gắn bề mặt)



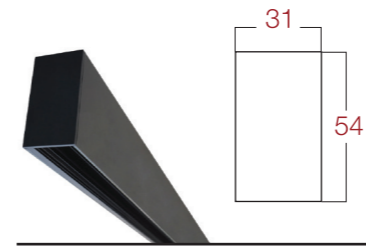
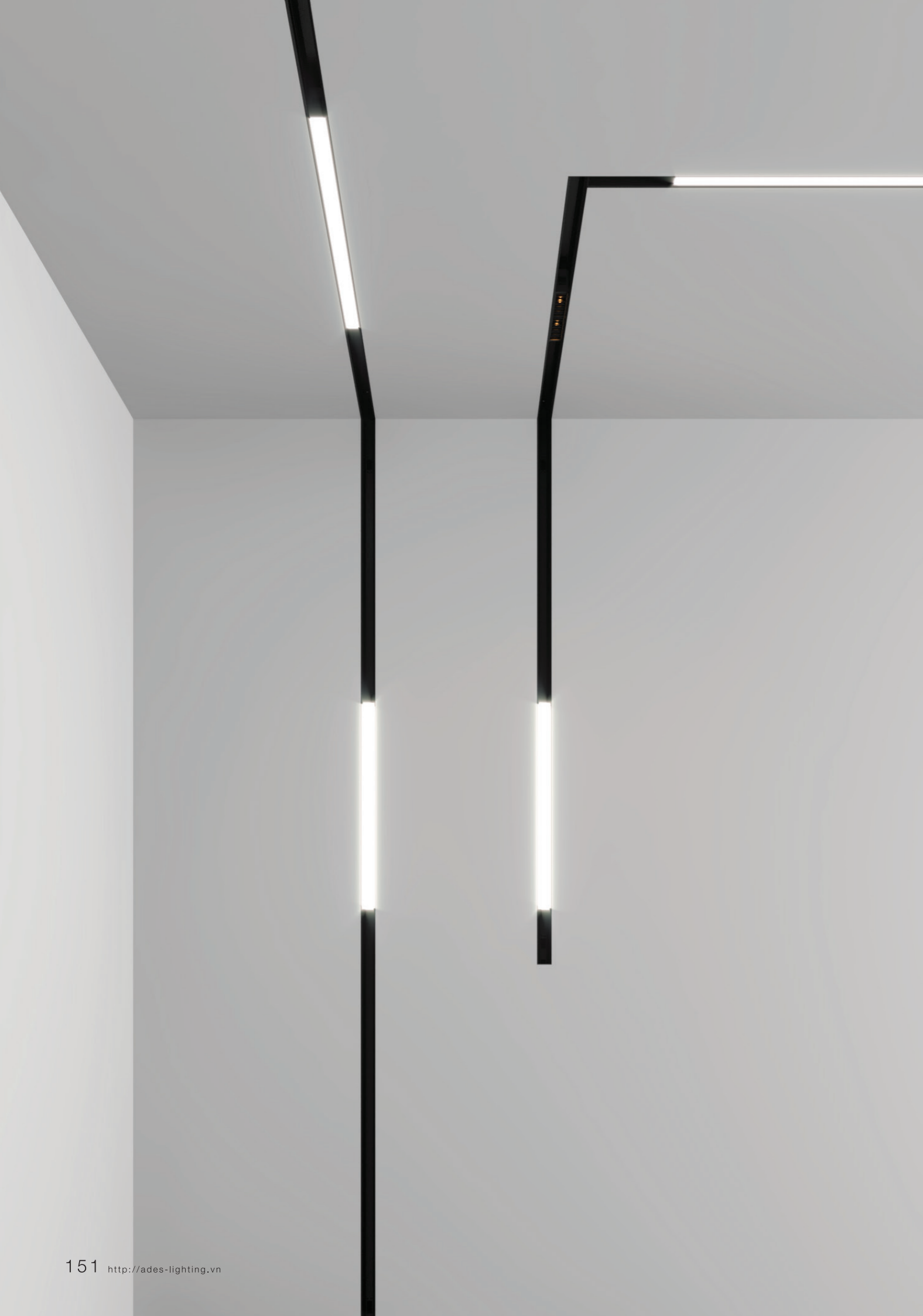
Recessed track with trim  
(Ray âm có cánh)



Recessed track with deeper trim  
(Ray âm có cánh)



Suspended Track  
(Ray treo)



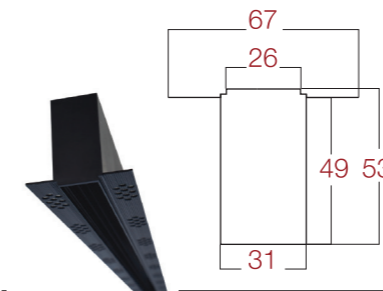
Model: SSM500/ SSM1000/ SSM1500/ SSM2000  
 Dimensions: 0.5m/ 1m/ 1.5m/ 2m  
 Colour: Black, White  
 Output current: DC24V

Surface Mount track  
 (Ray gắn bề mặt)

Accessories



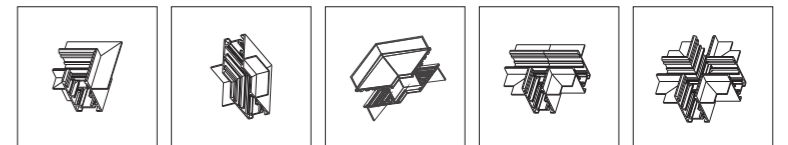
Mã : STC9001 Nối ngang L (Không viền)  
 Mã : STC9002 Nối góc trong L (Không viền)  
 Mã : STC9003 Nối góc ngoài L (Không viền)  
 Mã : STC9004 Nối ngang T (Không viền)  
 Mã : STC9005 Nối ngang đầu + (Không viền)



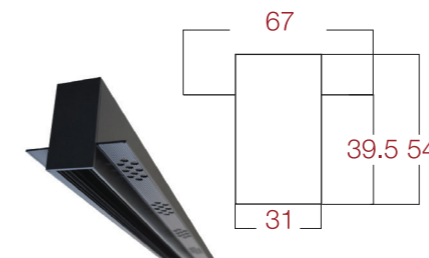
Model: SRC500A/ SRC1000A/ SRC1500A/ SRC2000A  
 Dimensions: 0.5m/ 1m/ 1.5m/ 2m  
 Colour: Black, White  
 Output current: DC24V

Recessed track with trim  
 (Ray âm có cánh)

Accessories



Mã : STC9011 Nối ngang L (có cánh cao)  
 Mã : STC9012 Nối góc trong L (có cánh cao)  
 Mã : STC9013 Nối góc ngoài L (có cánh cao)  
 Mã : STC9014 Nối ngang T (có cánh cao)  
 Mã : STC9015 Nối ngang đầu + (có cánh cao)



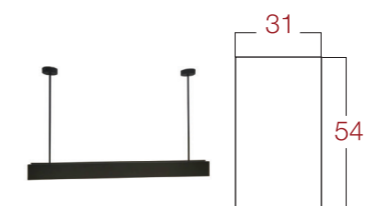
Model: SRD500B/ SRD1000B/ SRD1500B/ SRD2000B  
 Dimensions: 0.5m/ 1m/ 1.5m/ 2m  
 Colour: Black, White  
 Output current: DC24V

Recessed track with deeper trim  
 (Ray âm có cánh)

Accessories



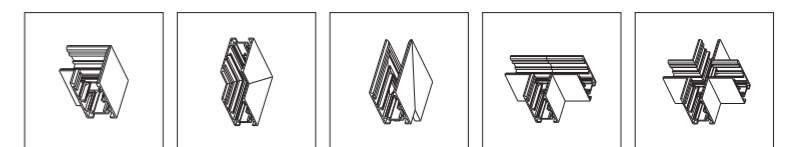
Mã : STC9006 Nối ngang L (có cánh)  
 Mã : STC9007 Nối góc trong L (có cánh)  
 Mã : STC9008 Nối góc ngoài L (có cánh)  
 Mã : STC9009 Nối ngang T (có cánh)  
 Mã : STC9010 Nối ngang đầu + (có cánh)



Model: SSP500/ SSP1000/ SSP1500/ SSP2000  
 Dimensions: 0.5m/ 1m/ 1.5m/ 2m  
 Colour: Black, White  
 Output current: DC24V

Suspended Track  
 (Ray treo)

Accessories



Mã : STC9001 Nối ngang L (không viền)  
 Mã : STC9002 Nối góc trong L (không viền)  
 Mã : STC9003 Nối góc ngoài L (không viền)  
 Mã : STC9004 Nối ngang T (không viền)  
 Mã : STC9005 Nối ngang đầu + (không viền)

# High power spotlight



White Black

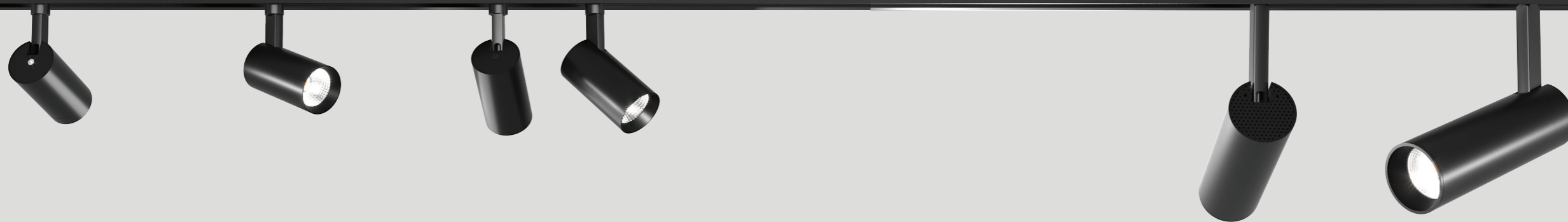
AMS4005




AMS4008

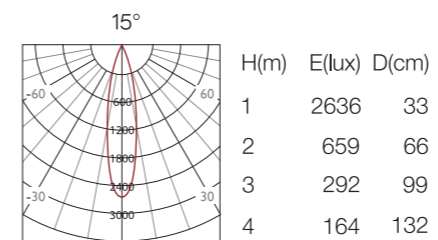
AMS4010

AMS5508

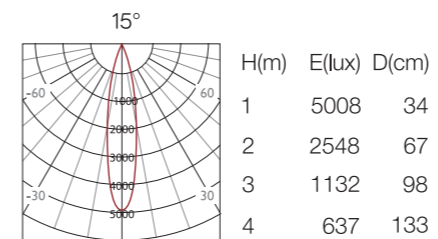
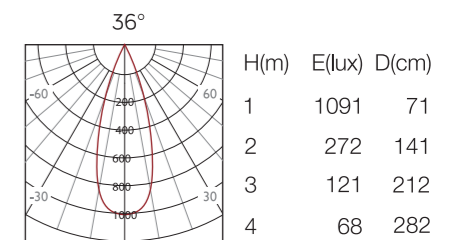
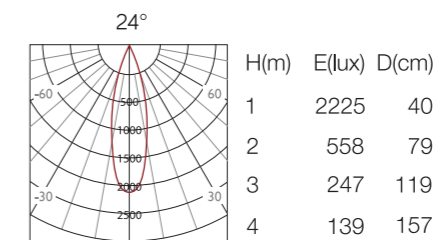
AMS5515



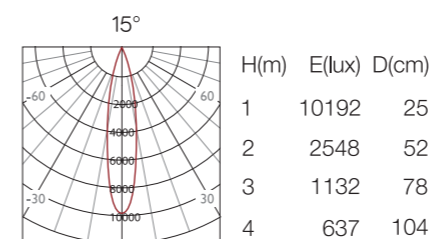
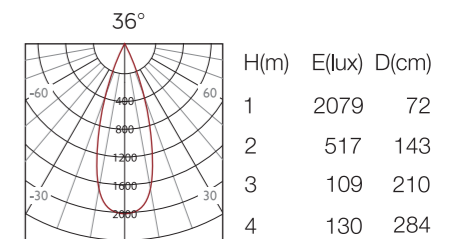
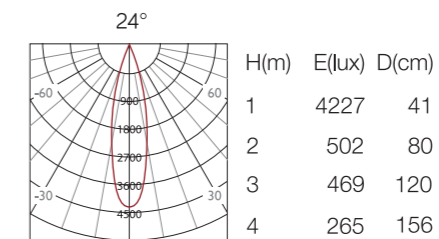
			
Model	AMS4005/AMS4008	AMS4010/AMS4016	AMS5508/AMS5515
Power	5W/8W	2*5W/2*8W	8W/15W
Optic	15°/24°/36°	15°/24°/36°	15°/24°/36°
Dimensions	40*76*93mm/40*101*93mm	40*76*93mm/40*101*93mm	55*105*142mm/55*170*142mm
Luminous flux	488lm/565lm	850lm/1400lm	680lm/1300lm
Input	DC 24V	DC 24V	DC 24V
Chip led	Osram	Osram	Osram



Model: AMS5508



Model: AMS4010



Model: AMS5515

